



2 Spinney Lane Cranbourne Hall Park, Winkfield, Windsor, SL4 4UD
£80,000

 **HORLER**

2 Spinney Lane Cranbourne Hall Park, Winkfield, Windsor, SL4 4UD

NO ONWARD CHAIN

Located within Cranbourne Hall Park in Winkfield, Windsor, this one-bedroom mobile home offers and provides simple, practical accommodation suitable for a single occupant or couple.



Property Summary

Inside, there is a bright living area with windows allowing in good natural light, along with a double bedroom, a second single bedroom come office and a functional kitchen and bathroom. The layout makes good use of the available space and is easy to maintain.

Outside, the home benefits from off-street parking and a private rear garden, offering space for outdoor seating or light gardening. Cranbourne Hall Park is a quiet, established site with a small on-site shop and a friendly residential community.

Overall, this is a straightforward and affordable home in a pleasant setting, ideal for buyers looking for a low-cost property in the Windsor area.

General Information

Pitch Fee From 01 Jan2026 £255.45

Family Park

Council Tax Band 'A'

Legal Note

Although these particulars are thought to be materially correct their accuracy cannot be guaranteed and they do not form part of any contract.





Spinney Lane SL4

Approximate Gross Internal Floor Area = 39.3 sq m / 423 sq ft

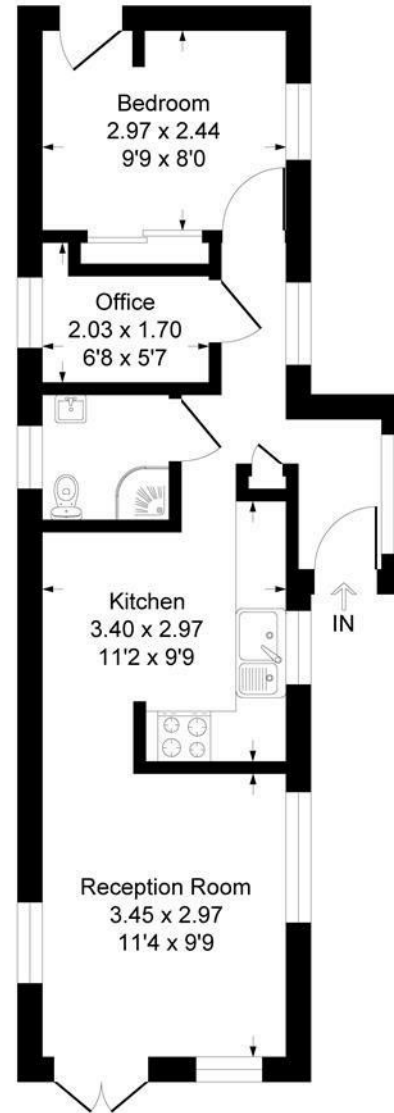


Illustration for identification purposes only, measurements are approximate, not to scale.
Produced By Esjay Property Marketing